

Novel Generation V-Shape System

A complete solution to cellulite, body contouring and facial treatment.



AURORA
Discover the new light

MULTISHAPE II

Five Technologies In One

Mechanical
Roller
Massage

Vacuum

Infrared

Cavitation

Bipolar RF

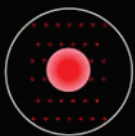


MULTISHAPE II



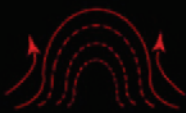
Bipolar RF

Three frequencies RF
Penetration depth: Deep, Middle, Light



Focus Infrared

Matrix of leds
Focused by convex lens



Vacuum Massage

Two working modes: Cyclical working &
Hi-frequency vibration working
No purpura, no down time after treatment



Mechanical
Massage Roller

Two eccentric rollers
Actively roll up and massage the skin tissue



Focus RF &
Cavitation

Dual transducers focus on target area
Bipolar RF and cavitation output simultaneously

Handpiece

Technology

Treatment Area

No.1



Arm, Leg, Shoulder

No.2



Abdomen, Waist, Back
Thigh, Buttock

No.3



Face, Neck, Eye

No.4



Abdomen, Waist, Back
Thigh, Buttock



Cleaning & Filtering Apparatus



Level 1: When starting the cleaning procedure and filling water with 45-60 degree celsius from the window of applicator, **Waste Bottle** can store the dirty water. Cleaning once per month keeps the entire air pipes totally cleaning.



Level 2: **SMC Filter** absorbs the redundant oil or cream. Working like a indicator, it can be easily uninstalled and repeatedly used after cleaning.



Level 3: Inner installed **Gas-oil Separation Container** further prevent any oil or cream going into those inner components.

Super Silence Design, Less Than 55DB



Clinical Result Before & After Photos

Waist



Before

After One Treatment

Waist



Before

After One Treatment

Thigh



Before

After One Treatment

Thigh



Before

After One Treatment

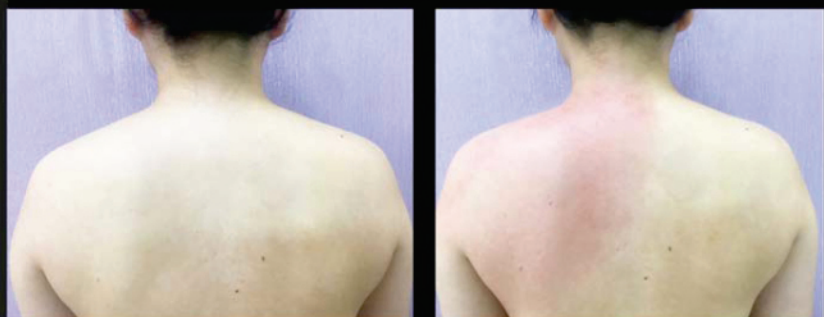
Arm



Before

After One Treatment

Shoulder



Before

After One Treatment

Technical Specification

Vacuum negative pressure	Absolute value	90kPa -25kPa(68.4Hg -19Hg)
	Relative value	10kPa -75kPa(7.6Hg -57Hg)
	Working Mode:	1-8s cyclical working High-frequency vibration working
Radio frequency	Power	150W Max
	Frequency	Three different frequencies
	Penetration depth	Deep/Middle/Light(Optional)
	Output way	Rollers of Handpiece No.2 Electrode pieces of Handpiece No.1 & No.3 Transducer of Handpiece No.4
Cavitation	Power	60W Max
	Frequency	60kHz
Infrared light	Power	16W rated of Handpiece No.1 40W rated of Handpiece No.2
	Wavelength	850nm
	Output	Focused by convex lens
Mechanical roller	Power	4W Max
	Speed	15RPM rated
Display screen	Main machine	10.4 inch touch screen
	Handpiece No.2 & No.4	2.4 inch color display screen
Physical dimension	620cm*520cm*1600cm	
Net weight	50Kg	
Electrical requirement	AC220V±10%,50Hz/AC110V±10%,60Hz	

Distribuidor Exclusivo

Profimédica



@profimédica



(0412) 287.0477

www.profimedica.com